

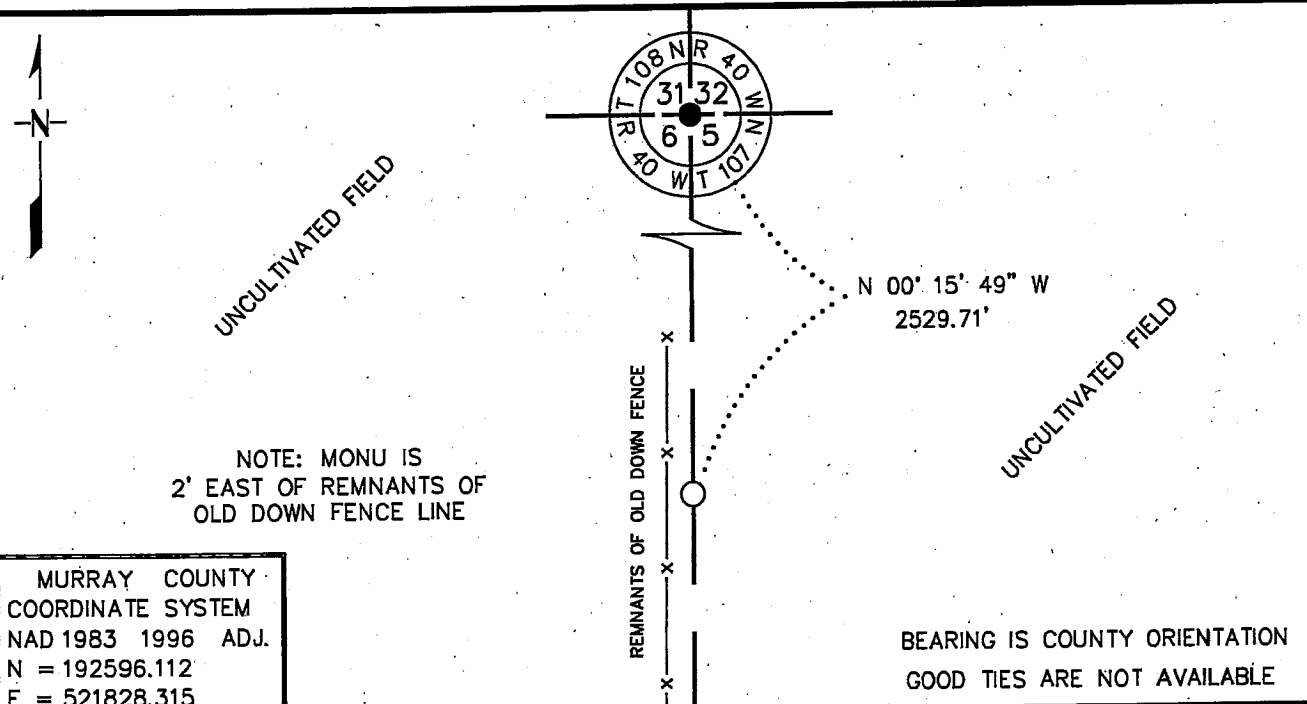
Index No. C-5

CERTIFICATE OF LOCATION OF GOVERNMENT CORNER

EAST QUARTER Corner of Section 6, Township 107 N, Range 40 W
5th Principal Meridian, State of Minnesota, County of MURRAY

At the corner location shown on the sketch:

- On 4/29/2008 found a 10" X 7" X 5" STONE, DOWN 2.2'
DATE
N-S FENCE.
 - left monument as found, ☐ lowered monument, ☐ removed monument (explain)
- On 4/29/2008 Placed a 3/4" X 24" REBAR WITH PLASTIC CAP STAMPED
DATE
"MN DNR LS 17003", FLUSH, OVER STONE



Statement of evidence for this corner location is on back of this page.

11/3/2008
 SPK00220.00.00.01

I certify that this document was researched and prepared by me or under my direct supervision.

SIGNATURE Renee W. Shoppert DATE 10/14/09 License Number 17003
 Title: ☒ Land Surveyor ☐ Professional Engineer ☐ County Surveyor ☐ County Engineer

The DNR Division of Lands and Minerals contacted the following for survey information:

Minnesota Secretary of State's Office
Murray County Recorder's Office
Murray County Highway Engineer's Office
Bueltel-Moseng Land Surveying of Marshall
Zieske Land Surveying Inc. of Windom
Madsen Land Surveying Inc. of Fairmont
Pellinen Land Surveying of Hutchinson

- 1861 U.S. General Land Office notes, obtained from the Secretary of State's Office, show the corner as follows:

"Set 1/4 Sec Cor P & M"

The corner is also shown:

38.40 chains (2534.40 feet) from the northeast corner of Section 6
30.00 chains (1980.00 feet) from Meander Corner Number 7
40.00 chains (2640.00 feet) from the southeast corner of Section 6

- 1913 October, Surveyor's Record Book A, page 235, obtained from the County Recorder's Office, contains a survey of Section 5 by J.H. Woolstencroft. Survey states "nothing" at the corner location.

- 1913 October, Surveyor's Record Book, obtained from the County Highway Engineer's Office, contains a survey of Section 5 by J.H. Woolstencroft. Survey states "nothing" at the corner location.

- 1936 A Survey Map by the National Park Service that shows Sections 5 and 6, T107N, R40W, Sections 1 and 2, T107N, R41W, and Sections 35 and 36, T108N, R41W, in the possession of the DNR Division of Lands and Minerals, shows the intersection of fences north-south-east in the area of the corner:

2525.0 feet from the northeast corner of Section 6
1315.0 feet north of the intersection of fences north-south-east

- 1936 November 14, the deed description for Shetek Monument Site, obtained from the County Recorder's Office, calls out the point of beginning as follows:

1337.7 feet south and 1922.2 feet west of the quarter corner

- 1937 A proposed Land Acquisition Map for Lake Shetek State Park, in the possession of the DNR Division of Lands and Minerals, shows a point:

1405.16 feet south and 1839.20 feet west of the quarter corner

A description of a monument found or set at the quarter corner is not given.

- 1938 A map in a Final Certificate in the matter of Condemnation of Certain Lands from District Court Thirteenth Judicial District, in the possession of the DNR Division of Lands and Mineral, shows a symbol for the quarter corner but a description of what kind of monument was found or set is not given. The corner is shown:

1826.5 feet north of the center line of a road that's on the east line of Section 6

The map also shows a point:

1405.16 feet south and 1839.20 feet west of the quarter corner

- 1958 The plat of FORMAN ACRES in Section 6 by Wm. P. Mohr, LS 3271, obtained from the County Recorder's Office, shows a symbol for corner but does not indicate what kind of monument was found or set. The description for the plat commences at the quarter corner and has the following calls:

South 00 degrees 00 minutes West along the east line of said section 1405.16 feet; South 89 degrees 27 minutes West 1905.55 feet; South 04 degrees 21 minutes West 94.92 feet to the point of beginning; etc

- 1960 The plat of HUDSON ACRES in Section 7 by John F. O'Meara, LS 273, obtained from the County Recorder's Office, shows a symbol for corner but does not indicate what kind of monument was found or set. The description for the plat commences at the quarter corner and has the following calls:

South 00 degrees 00 minutes West along the east line of said section 1405.16 feet; South 89 degrees 27 minutes West 1905.55 feet; South 04 degrees 21 minutes West 94.92 feet; South 15 degrees 22 minutes West 525.32 feet; South 14 degrees 43 minutes West 777.95 feet; South 06 degrees 14 minutes East 1985.75 feet to the point of beginning; etc

- 1966 The plat of SUBDIVISION OF BLOCK 3 OF FORMAN ACRES in Section 6 by J.S. Richmond, LS 2129, obtained from the County Recorder's Office, shows the same information about the quarter corner as the plat of FORMAN ACRES.

- 1966 DNR Bureau of Engineering contracted N.C. Hoiium and Associates Inc. of Coon Rapids, Minnesota, to survey property in Lake Shetek State Park. The DNR records of survey show that a traverse was run from the area of the northeast corner of Section 6 to the area of the meander corner on the east line of Section 6. A location for the quarter corner is not given, however the intersection of fences north-south-east is shown to be on the east line of Section 6:

2515.37 feet from the northeast corner of Section 6

A description of what kind of monument was found or set at the intersection of fences is not given.

1982 March, the DNR Bureau of Engineering traversed to the area of the corner and set a spike at the intersection of a north-south fence line and field division east. A position for the quarter corner was not determined.

2008 April 29, the DNR Division of Lands and Minerals hired a backhoe, operated by Butch Barton of B & L Excavation, Inc. of Currie, to dig for evidence of a monument at the corner. A 5 foot east-west by 50 foot north-south by 2.5 foot deep trench was dug and a 10 inch by 7 inch by 5 inch stone (only stone found in the excavation) was found down 2.2 feet and 2 feet east of the remnants of an old down north-south fence. Also, found small bits of wood next to the stone, but too far decayed to positively identify.

A $\frac{3}{4}$ inch by 24 inch rebar with a plastic cap stamped 'MN DNR LS 17003' was set over the stone and was found to be:

- a) 2529.71 feet from the northeast corner of Section 6
- b) 2640.7 feet north of the westerly extension of the center line of east-west CSAH 37 located along the south line of the Southwest Quarter of Section 5
- c) 1755 feet north of the centerline of CSAH 37
- d) 82 feet south of intersection of the north-south fence line and field division east located in 1982

The center of the trench was 19 feet north of the found stone.

Iron monuments at lot corners were located in the plat of FORMAN ACRES and a position for the quarter corner was computed and found to be 160 feet north of the found stone.

Analysis of the above information led the DNR Division of Lands and Minerals to conclude that the found stone marks the location of the corner.